

THE BEAUMONT

3-BEDROOM DETACHED PROPERTY



A CONTEMPORARY THREE-BEDROOM HOME FOR MODERN FAMILY LIVING

With its striking design, integrated garage and elegant porch, The Beaumont is a contemporary home of true distinction. Made for modern lifestyles, The Beaumont features free-flowing, open-plan living, dining and kitchen areas that face the rear garden, so privacy is maintained even while natural light floods through French doors. The spacious master bedroom benefits from its own en suite shower room, as well as useful built-in storage space.

Live the dream...


MACBRYDE
HOMES

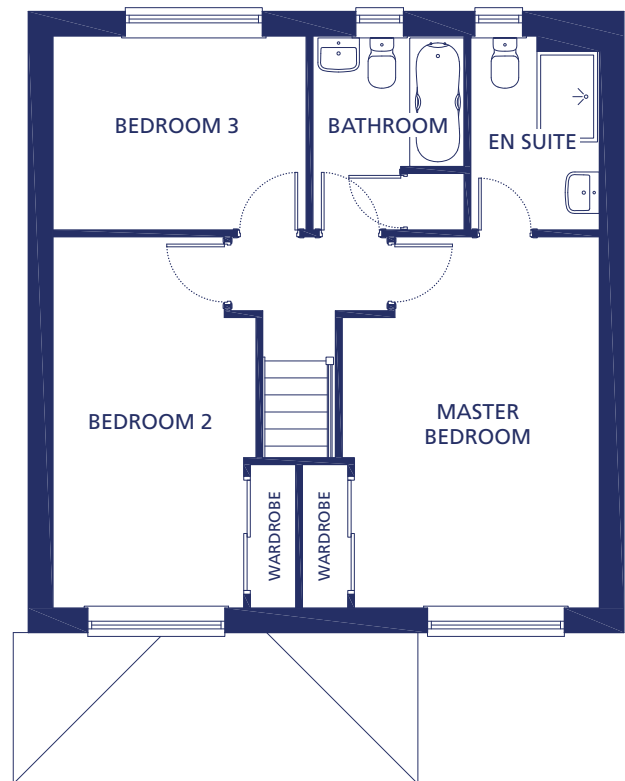
THE BEAUMONT

3-BEDROOM DETACHED PROPERTY

GROUND FLOOR



FIRST FLOOR



Ground Floor

Kitchen/Dining/Lounge	7.51m x 7.18m	24'6" x 23'6"
W.C.	1.77m x 0.82m	5'8" x 2'6"

First Floor

Master Bedroom	4.88m x 3.37m	16'0" x 11'0"
En Suite	2.54m x 1.67m	8'3" x 5'4"
Bedroom 2	4.88m x 2.66m	16'0" x 8'7"
Bedroom 3	3.32m x 2.54m	10'8" x 8'3"
Bathroom	2.54m x 2.00m	8'3" x 6'5"

Please note the images shown are for illustrative purposes only, and no information contained within this document will form any part of a contract. All measurements given are approximate, and the building materials (brickwork, render and roof tiles) used for each individual plot may differ in colour and arrangement from these images. Homes may be 'handed' (mirror image) versions of those shown, and properties may be constructed as detached, semi-detached or terraced properties. The detailed plans and specification of each property are available at our Sales Office during opening hours, and prospective purchasers must check the details of their particular plot prior to making a reservation.

**CONSUMER
CODE FOR
HOME BUILDERS**

www.consumercode.co.uk