

THE CHATSWORTH

4-BEDROOM DETACHED PROPERTY



EXTERNAL VARIATIONS



SPACE AND CLASSIC DESIGN COMBINE TO MAKE THE CHATSWORTH A STUNNING MODERN HOME

With its striking portico entrance, and light welcoming space of an open-plan kitchen/dining area, The Chatsworth effortlessly blends classical styling with modern flair. Elegant French doors link indoor and outdoor living, perfect for those long summer days. To the first floor, four generously-proportioned bedrooms with an en suite bathroom to the master bedroom make this refined yet spacious detached home perfect for growing families and changing lifestyles.

Live the dream...

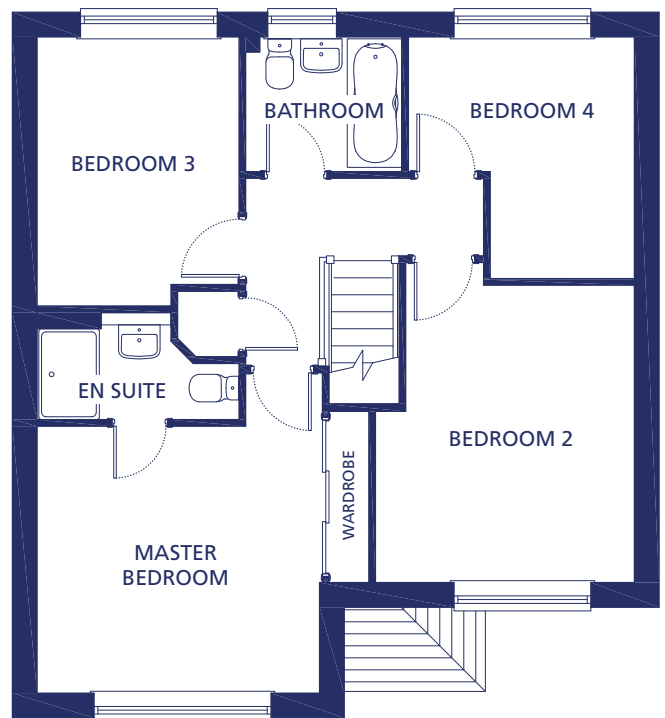

MACBRYDE
HOMES

THE CHATSWORTH

4-BEDROOM DETACHED PROPERTY

GROUND FLOOR

FIRST FLOOR



Ground Floor

Kitchen/Family/Dining	7.85m x 3.95m	25'9" x 12'11"
Lounge	5.61m x 3.71m	18'4" x 12'2"
Utility	1.88m x 1.87m	6'1" x 6'1"
W.C.	1.88m x 1.16m	6'1" x 3'9"

First Floor

Master Bedroom	3.69m x 3.50m	12'1" x 11'4"
En Suite	2.65m x 1.20m	8'8" x 3'11"
Bedroom 2	3.91m x 3.00m	12'9" x 9'10"
Bedroom 3	3.53m x 2.65m	11'5" x 8'8"
Bedroom 4	3.17m x 2.96m	10'4" x 9'8"
Bathroom	2.06m x 1.76m	6'9" x 5'9"

Please note the images shown are for illustrative purposes only, and no information contained within this document will form any part of a contract. All measurements given are approximate, and the building materials (brickwork, render and roof tiles) used for each individual plot may differ in colour and arrangement from these images. Homes may be 'handed' (mirror image) versions of those shown, and properties may be constructed as detached, semi-detached or terraced properties. The detailed plans and specification of each property are available at our Sales Office during opening hours, and prospective purchasers must check the details of their particular plot prior to making a reservation.

**CONSUMER
CODE FOR
HOME BUILDERS**

www.consumercode.co.uk