

THE KINGSTON

3-BEDROOM DETACHED PROPERTY



EXTERNAL VARIATIONS

A DELIGHTFUL THREE-BEDROOM HOME WITH AN ABUNDANCE OF STORAGE

A charming canopy porch welcomes you into this spacious three-bedroom home. At the heart of The Kingston is an airy yet practical kitchen/dining area, together with a separate cloakroom, while the beautiful lounge is the perfect place to relax. The master bedroom boasts an en suite bathroom and built in storage, whilst two further spacious bedrooms and a sleek family bathroom complete the second floor.

Live the dream...

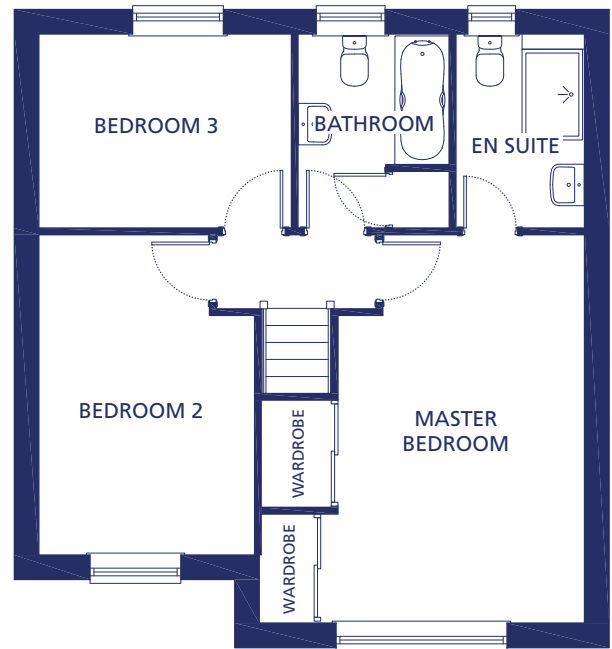
THE KINGSTON

3-BEDROOM DETACHED PROPERTY

GROUND FLOOR



FIRST FLOOR



Ground Floor

Kitchen/Dining	7.16m x 3.13m	23'4" x 10'3"
Lounge	4.46m x 3.23m	14'7" x 10'6"
W.C.	1.58m x 1.05m	5'2" x 3'5"

First Floor

Master Bedroom	5.11m x 3.34m	16'9" x 10'11"
En Suite	2.54m x 1.68m	8'4" x 5'6"
Bedroom 2	4.21m x 2.83m	13'9" x 9'2"
Bedroom 3	3.31m x 2.54m	10'8" x 8'4"
Bathroom	2.54m x 2.0m	8'3" x 6'5"

Please note the images shown are for illustrative purposes only, and no information contained within this document will form any part of a contract. All measurements given are approximate, and the building materials (brickwork, render and roof tiles) used for each individual plot may differ in colour and arrangement from these images. Homes may be 'handed' (mirror image) versions of those shown, and properties may be constructed as detached, semi-detached or terraced properties. The detailed plans and specification of each property are available at our Sales Office during opening hours, and prospective purchasers must check the details of their particular plot prior to making a reservation.

**CONSUMER
CODE FOR
HOME BUILDERS**

www.consumercode.co.uk