

THE WARWICK & STRATFORD

2 & 3-BEDROOM TOWNHOUSES



**FEEL RIGHT AT HOME IN THESE STUNNING, OPEN-PLAN TOWNHOUSES,
PERFECT FOR THE MODERN LIFESTYLE**

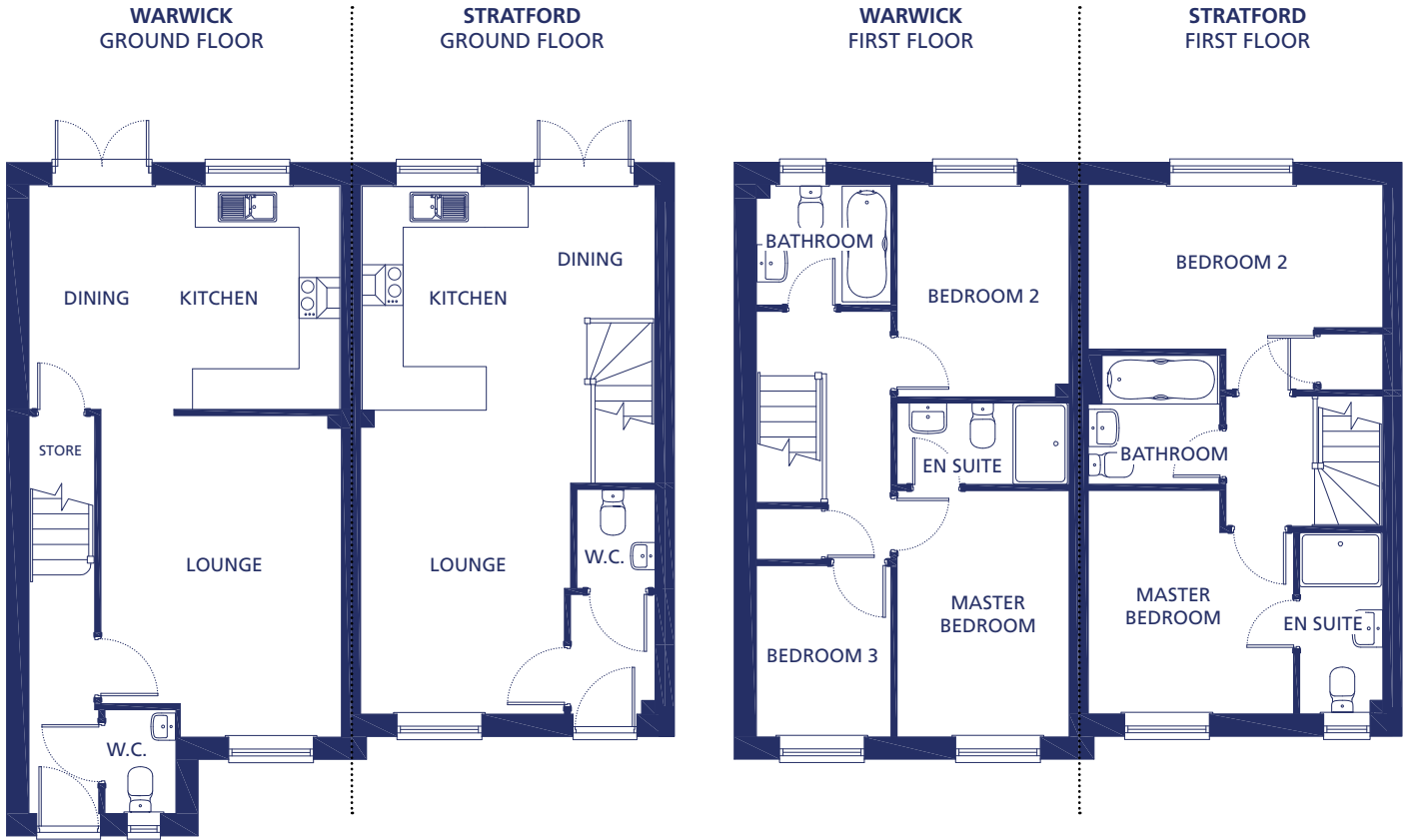
An inviting, open-plan layout throughout these properties creates a sense of space – the lounge seamlessly flows into the kitchen/diner and out through the French doors, truly bringing the outside in. Upstairs you'll find spacious bedrooms, a sleek family bathroom and an en suite bathroom to the master, perfect for first-time buyers or downsizers.

Live the dream...


MACBRYDE
HOMES

THE WARWICK & STRATFORD

2 & 3-BEDROOM TOWNHOUSES



THE WARWICK

Ground Floor

Kitchen/Dining	4.55m x 3.28m	14'9" x 10'8"
Lounge	4.70m x 3.51m	15'4" x 11'5"
W.C.	1.50m x 1.02m	4'9" x 3'3"

First Floor

Master Bedroom	3.60m x 2.50m	11'8" x 8'2"
En Suite	2.50m x 1.20m	8'2" x 3'9"
Bedroom 2	3.10m x 2.50m	10'2" x 8'2"
Bedroom 3	2.50m x 1.96m	8'2" x 6'4"
Bathroom	1.96m x 1.75m	6'4" x 5'7"

THE STRATFORD

Ground Floor

Kitchen/Dining	4.28m x 3.29m	14'0" x 10'8"
Lounge	4.44m x 3.06m	14'5" x 10'0"
W.C.	1.46m x 1.13m	4'8" x 3'7"

First Floor

Master Bedroom	3.26m x 2.99m	10'7" x 9'8"
En Suite	2.65m x 1.20m	8'7" x 3'9"
Bedroom 2	4.30m x 2.99m	14'1" x 9'8"
Bathroom	1.90m x 1.91m	6'2" x 6'3"

Please note the images shown are for illustrative purposes only, and no information contained within this document will form any part of a contract. All measurements given are approximate, and the building materials (brickwork, render and roof tiles) used for each individual plot may differ in colour and arrangement from these images. Homes may be 'handed' (mirror image) versions of those shown, and properties may be constructed as detached, semi-detached or terraced properties. The detailed plans and specification of each property are available at our Sales Office during opening hours, and prospective purchasers must check the details of their particular plot prior to making a reservation.

**CONSUMER
CODE FOR
HOME BUILDERS**

www.consumercode.co.uk